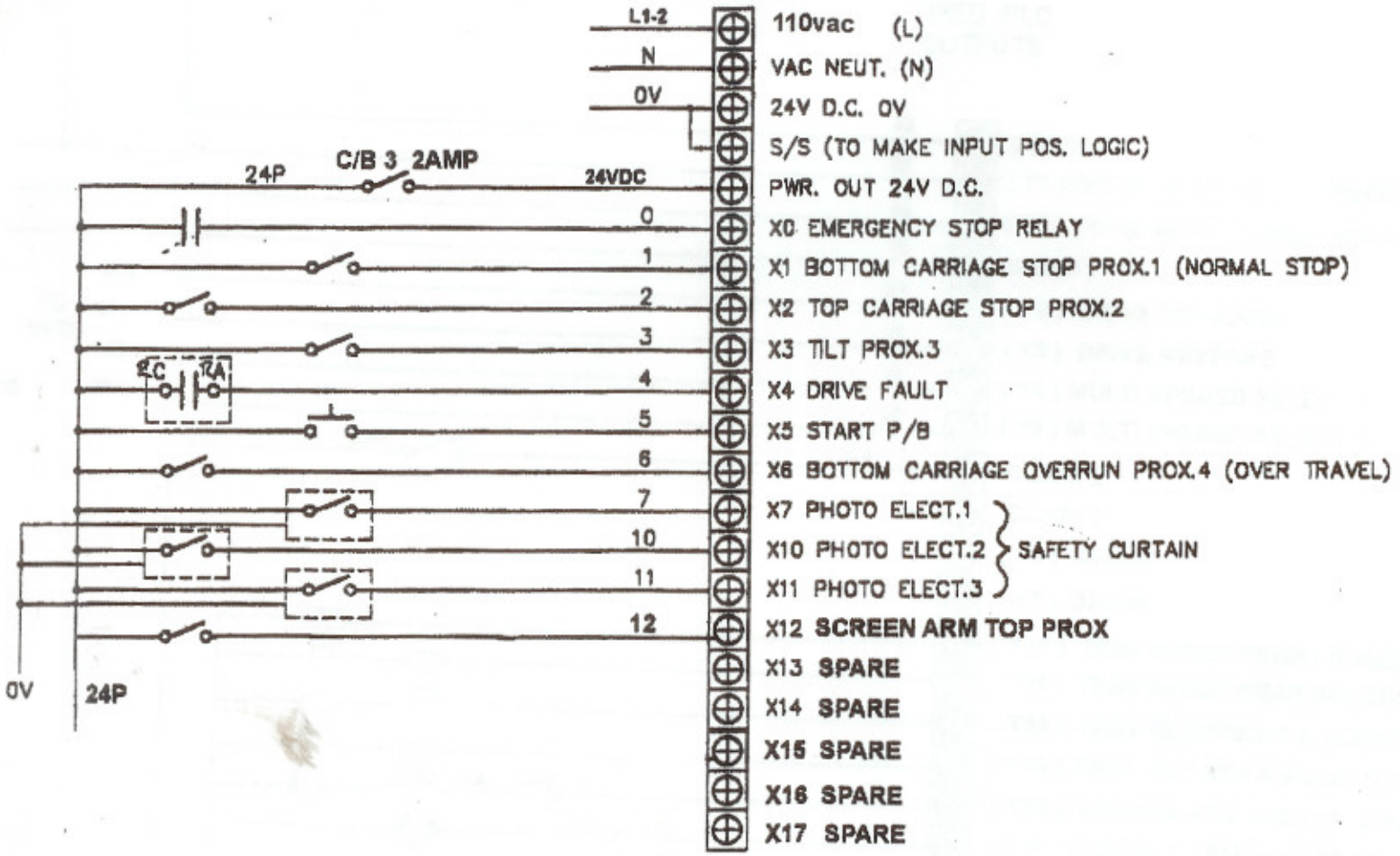


MITSUBISHI PLC
 INPUTS
 FIXED PLC



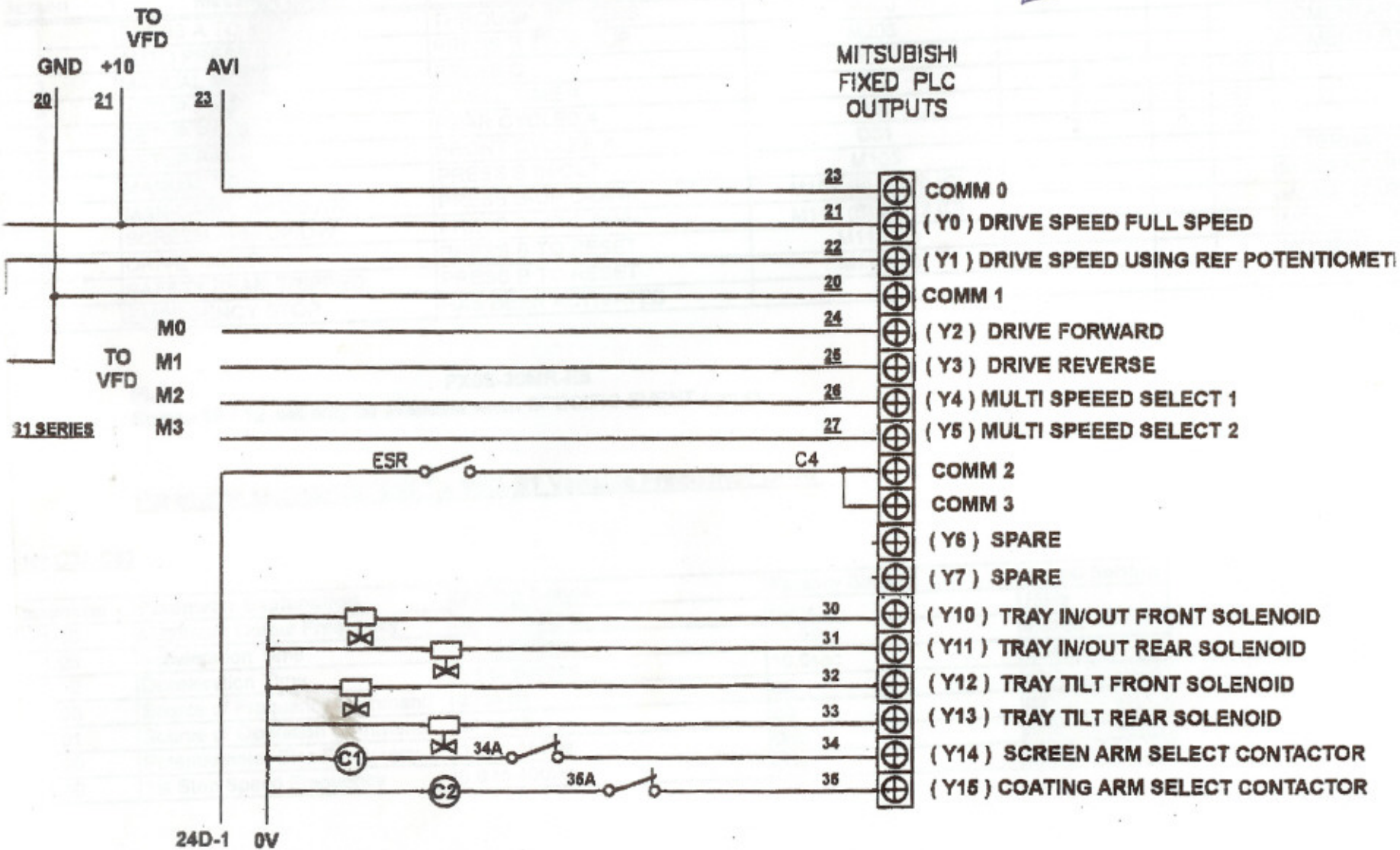
FX0S-20MR-ES

Andy-Aston

\$300

20-25% discount

3 USING FX0S-30MR-ES Motorised screen arm version 10/12/99



**FX-10DU-E Program for Q-Lux Coater
Program for C62-C63**

Screen	Message Line 1	Message Line 2	Control Relay / Register	Digits	Min	Max	Switch Type
1	PRESS A TO INDEX	THROUGH SCREENS	M200				MOMENTARY
2	AUTO PRESS START	PRESS B TO SETUP	M203				MOMENTARY
3	MANUAL MODE	PRESS C	M204				MOMENTARY
4	SETUP PAGE	DWELL TIME =	D12	2	0	20	
5	SETUP PAGE	REAR CYCLES =	D30	2	0	99	
6	SETUP PAGE	FRONT CYCLES =	D31	2	0	99	
7	MANUAL TRAYS	PRESS B IN/OUT	M105				ALTERNATING
8	MAN-CARR. UP/DOWN	PRESS B-UP C-DWN	M109 (B) M110 (C)				MOMENTARY
9	SCREEN ARM UP/DW	PRESS B-UP C-DWN	M111 (B) M112 (C)				MOMENTARY
10	DRIVE FAULT	PRESS B TO RESET	M113 (B)				MOMENTARY
11	SAFETY BEAM TRIPPED	PRESS B TO RESET	M114 (B)				MOMENTARY
12	EMERGENCY STOP	HAS BEEN ACTIVATED					

PLC

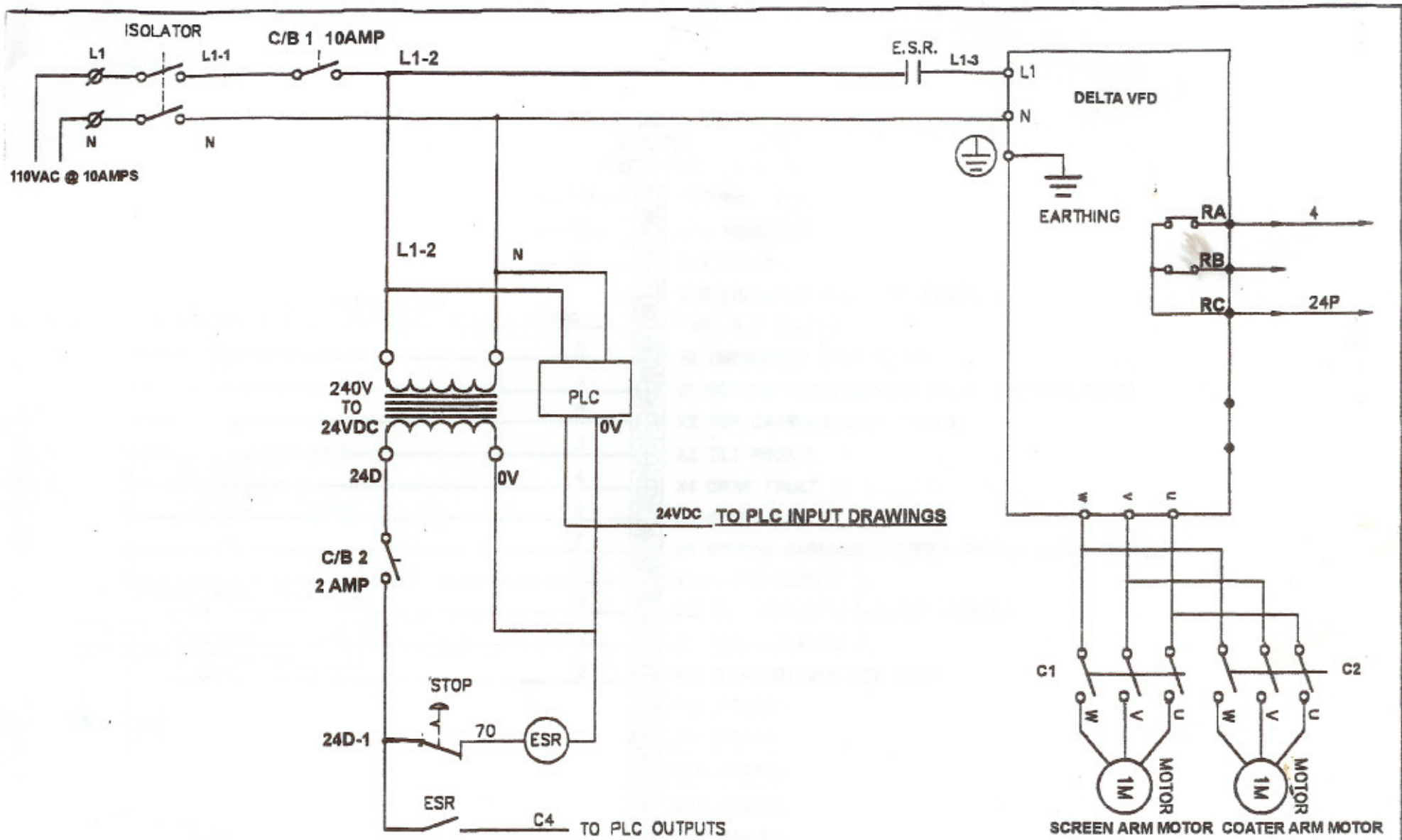
FX0S-30MR-ES

Screen 10 - 12 will only be available when SPECIFIC EVENT occurs

Parameter settings for DELTA VFD-S1 Variable Frequency Drive

ter C32-C63

Parameter	Parameter Explanation	Setting Range	Factory Setting	Actual Setting
1.00	Maximum Output Frequency	50.0 to 400Hz	60Hz	75Hz
1.09	Acceleration Time	0.1 to 600sec	10.0sec	0.5sec
1.10	Deceleration Time	0.1 to 600sec	10.0sec	0.1sec
2.00	Source of Frequency Command	d0 to d4	d0	d1
2.01	Source of Operation Command	d0 to d4	d0	d2
4.00	Potentiometer Bias Frequency	0.0 to 350Hz	0Hz	5Hz
5.00	1st Step Speed Frequency	0.0 to 400Hz	0Hz	25Hz



					SCALE N.T.S.	TITLE COATING MACHINE/KEYPAD ELECTRICAL DIAGRAMS			
					DATE 13/12/99				
					DRN.				
					CHK.				
1	8.12.97	GENERAL REVISION	T.C.		DRG. SIZE	SHT. OF SHTS. 1 3	REV. 3	DRAWING No.	FILE No.
REV.	DATE	DESCRIPTION	IGN.	DRN.	CHK.				