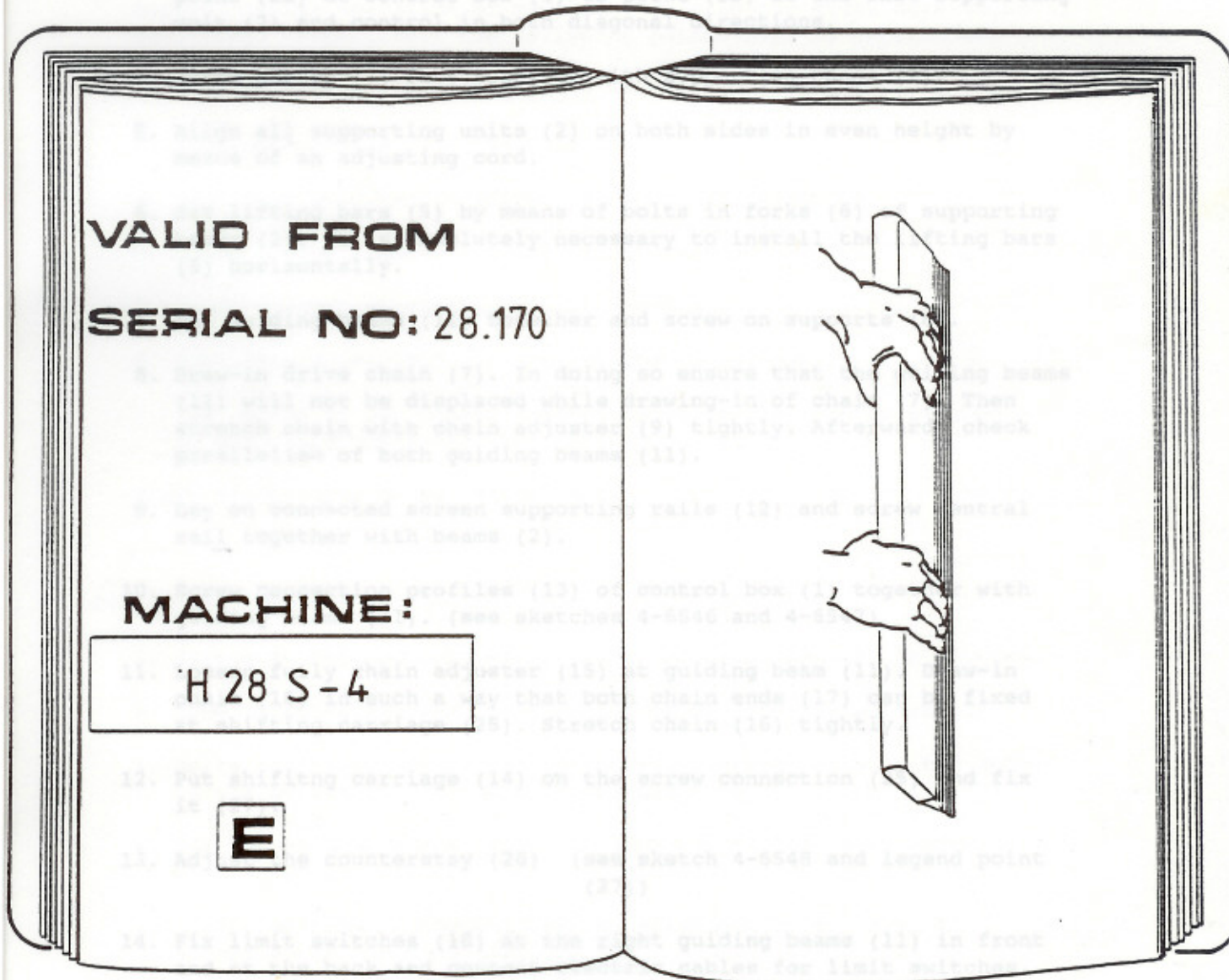


first copy

BEDIENUNGSANLEITUNG INSTRUCTION FOR USE MODE D'EMPLOI

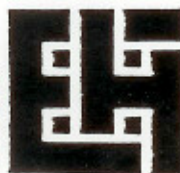
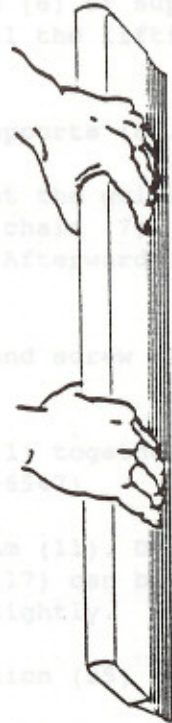


VALID FROM
SERIAL NO: 28.170

MACHINE:

H 28 S-4

E





GAUZE STRETCHING MACHINE H 28 S-4

(see sketches 4-6544 - 4-6548)

A) INSTRUCTION FOR ERECTION

1. Put control box (1) in correct position and adjust by means of water level.
2. Screw all supporting units (2) loosely together by means of struts (3). Note: the units (2) are numbered continuous starting from control box.
3. Align all supporting units(2) by means of an adjusting cord from point (2a) at control box (1) to point (2b) at the last supporting unit (2) and control in both diagonal directions.
4. Screw struts (3) fast together with supporting beams (2).
5. Align all supporting units (2) on both sides in even height by means of an adjusting cord.
6. Set lifting bars (5) by means of bolts in forks (6) of supporting beams (2). It is absolutely necessary to install the lifting bars (5) horizontally.
7. Put guiding beams (11) together and screw on supports (8).
8. Draw-in drive chain (7). In doing so ensure that the guiding beams (11) will not be displaced while drawing-in of chain (7). Then stretch chain with chain adjuster (9) tightly. Afterwards check parallelism of both guiding beams (11).
9. Lay on connected screen supporting rails (12) and screw central rail together with beams (2).
10. Screw connection profiles (13) of control box (1) together with guiding beams (11). (see sketches 4-6546 and 4-6547)
11. Loosen fully chain adjuster (15) at guiding beam (11). Draw-in chain (16) in such a way that both chain ends (17) can be fixed at shifting carriage (25). Stretch chain (16) tightly.
12. Put shifting carriage (14) on the screw connection (25) and fix it (27).
13. Adjust the counterstay (26) (see sketch 4-6548 and legend point (27))
14. Fix limit switches (18) at the right guiding beams (11) in front and at the back and connect electric cables for limit switches.

15. Insert clamps (19 + 20)
16. Connect electric supply and check correct moving direction of machine according to direction of arrow (on control panel) by means of switches (D+K). In case of incorrect moving direction exchange 2 phases of feed cable.
17. Move shifting carriage (14) forward, measure and adjust the parallelism between the clamp rails on the control box and shifting carriage (14).
Afterwards fix the screws (28).

B) INITIAL OPERATION AND MAINTENANCE

Before initial operation of machine the following steps have to be undertaken respectively the following points have to be checked:

1. stretch chains (7 + 16) tightly with chain adjusters (9 + 15)
2. lubricate chains (7 + 16) slightly
3. lubricate spindles in supporting units (2) slightly
4. check correct function of all limit switches
5. check correct stretching of all V-belts
6. lubricate cross-shaft in control box (1) slightly
7. the height of the screen supporting rails (12) can be aligned by adjusting the lifter rod (24)

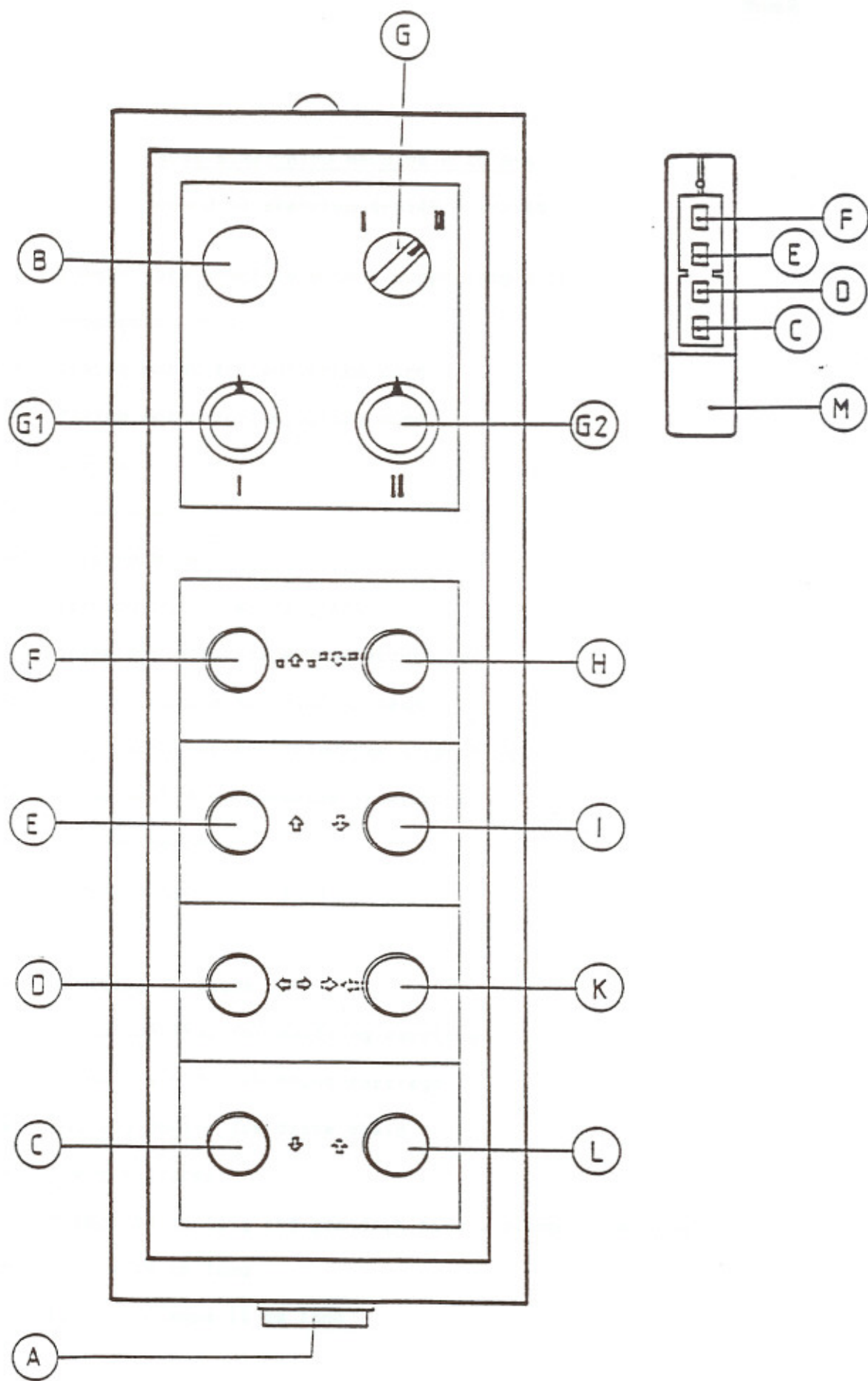
These points have to be checked monthly.

C) INSTRUCTIONS FOR USE

1. Switch on main switch (A) whereupon control lamp (B) is lighted.
2. Move shifting carriage (14) backwards by pressing switch (E).
3. Drive the clamp carriages (20) on the control box with the help of the switch (L) in the starting position.
4. Diverge guiding beams (11) with push-button (D) until screens can be set in.
5. Insert screens in equal distances (distance from screen to screen about 7 - 8 cm (2,5 - 3")).



6. If necessary, pre-stretch screens by means of supplied frame spanners (23).
7. Move shifting carriage (14) forward by means of push-bottom (G). Thereby make sure that the clamps (19) are closed and the clamps (21) of shifting carriage (14) do not touch clamps (19) when shifting carriage.
8. Fix gauze in clamps (21) of shifting carriages (14). Thereby ensure that the gauze lies exactly in the middle of both guiding beams (11).
9. Move shifting carriage (14) backwards until clamps (21) lie level with the last screen frame.
10. Fix gauze in clamps (20)
11. Stretch gauze in lengthwise direction by pressing switch (E). Thereby switch (Q) must be adjusted on position I (slow).
12. After reaching of necessary longitudinal stretching bring both guiding beams (11) together with switch (K) until gauze can be fixed in clamps (19).
13. After having closed all clamps (19) stretch gauze in crosswise direction with switch (D).
14. Equalize the lengthwise stretching in operating the switch (C).
15. After reaching of required gauze stretching insert cross-bars (22) in transverse direction between the screen frames.
16. Press screen frames against the gauze with switch (F).
17. Stick the gauze.
18. After drying lower screen frames with switch (H) whereby frame spanner (23) will be pulled of automatically.
19. Remove cross-bars (22).
20. Loosen slightly stretching in length- and crosswise direction by means of switches (I + K + L).
21. Cut gauze crosswise.
22. Take screen frames out of the machine.
23. After finish of work main switch (A) must be always switched off.
24. Attention: Do never carry out two machine movements simultaneously. Do never switch over during operation from slow speed directly to fast speed or vice versa before stop of machine.



H28S4

DATUM : 9.6.88
 ZCHG. NR. : 4-6544



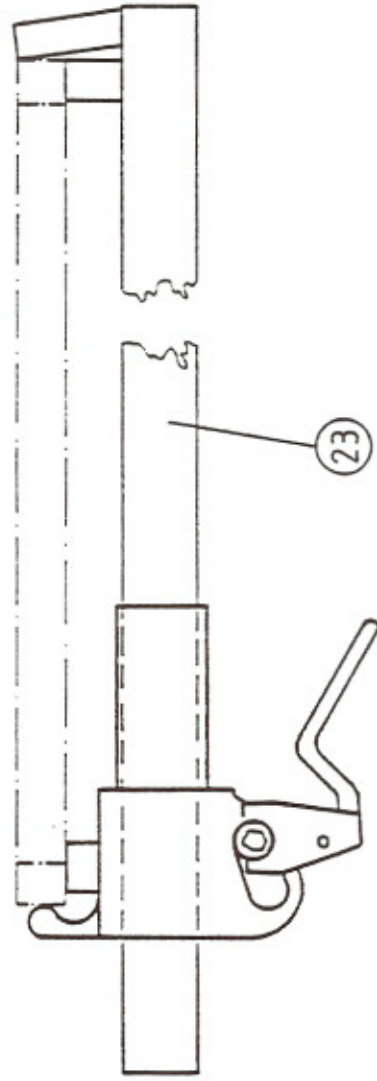
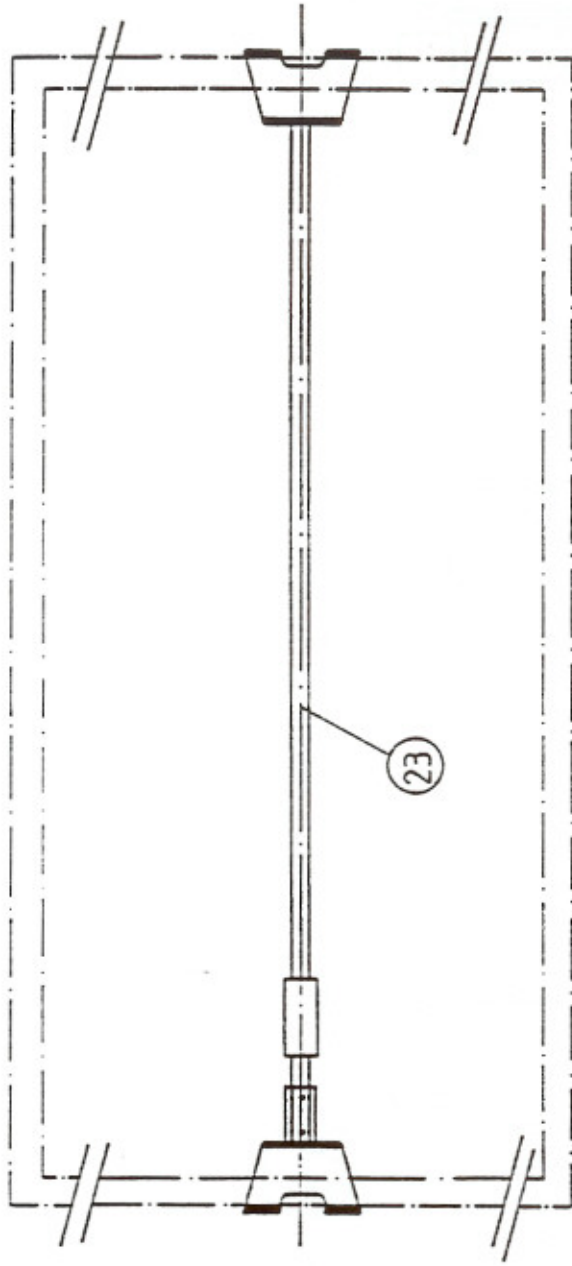
GAUZE STRETCHING MACHINE H 28 S-4

Legend to sketches 4-6545 - 4-6548

- 1 = control box complete with 1 supporting unit
- 2 = supporting unit
- 2a = fixing point for adjusting cord
- 2b = fixing point for adjusting cord
- 3 = struts
- 4 = screw feet
- 5 = lifting bars
- 6 = lifting bar fixation (fork)
- 7 = drive chain for crosswise stretching
- 8 = holding device for guiding beam
- 9 = chain adjuster for crosswise stretching
- 10 = drive unit for crosswise stretching
- 11 = guiding beams
- 12 = screen supporting rails
- 13
- 14 = shifting carriage
- 15 = chain adjuster for shifting carriage
- 16 = drive chain for shifting carriage
- 17 = holding device for drive chain
- 18 = limit switches
- 19 = clamps 15 cm long and per each side 1 clamp 30 cm long
- 20 = clamps 15 cm long
- 21 = special clamps 15 cm long

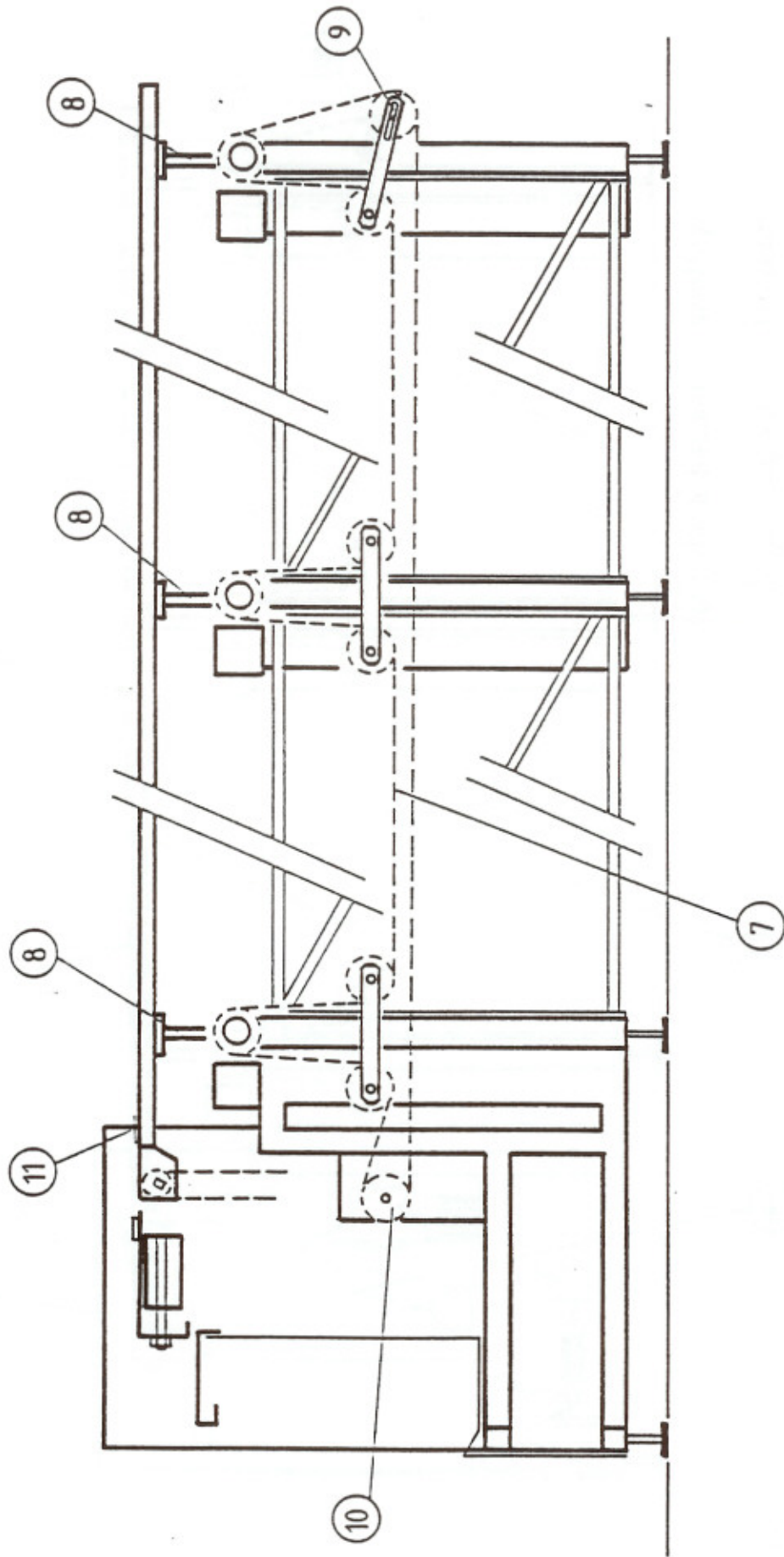
- 22 = cross-bar for holding down the gauze
- 23 = frame spanner
- 24 = adjustable lifter rod
- 25 = screw connection between drive chain and shifting carriage
- 26 = sliding foot
- 27 = distance between steady and rail 0,5 mm 1/32 inch
- 28 = fix and adjust point between screw connection and shifting carriage

Rudolfstetten, September 1993
BE28S4



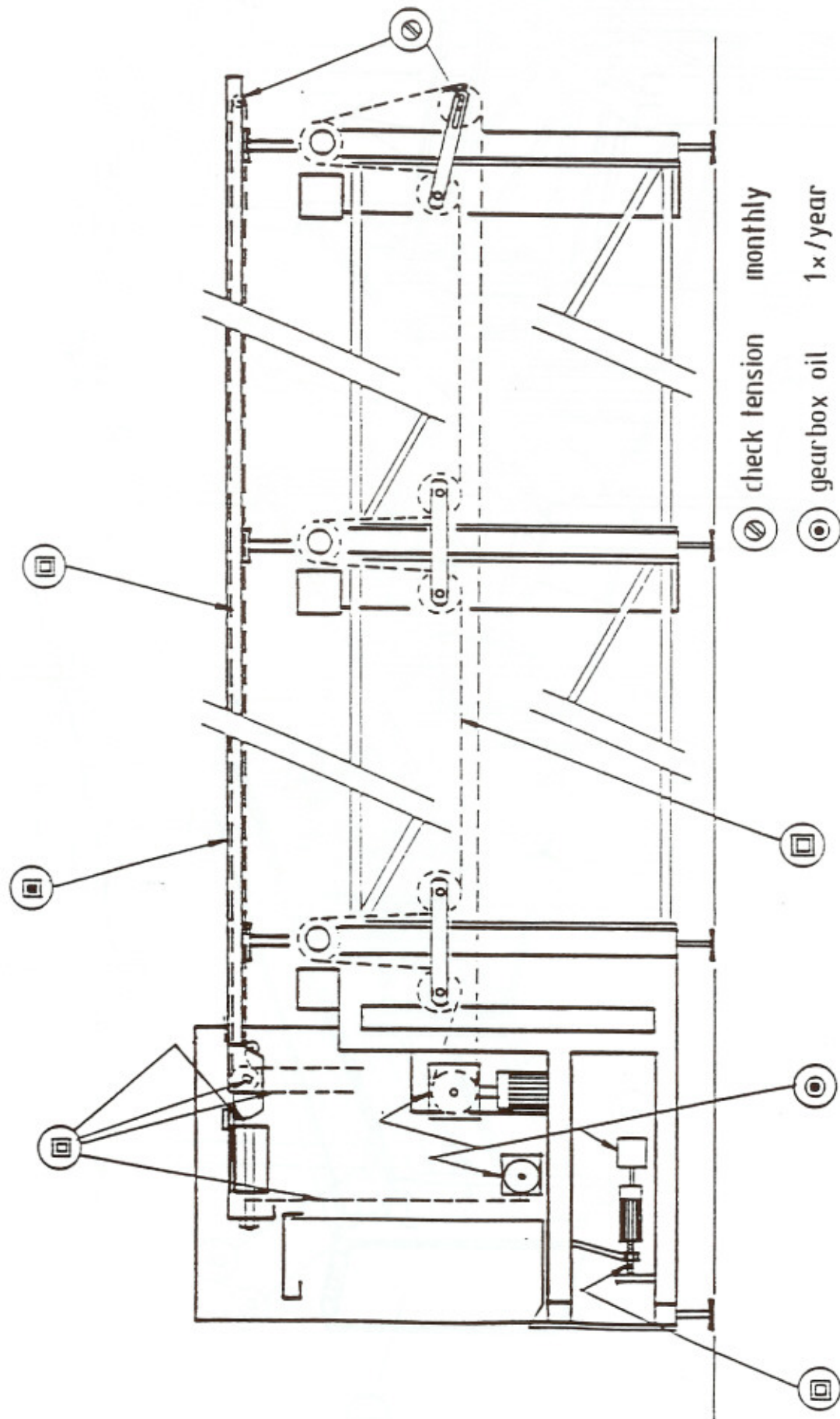
H28 S4

DATUM : 9.6.88
ZCHG. NR. : 4-6545



H28S4

DATUM : 9.6.88
ZCHG. NR. : 4 - 6546

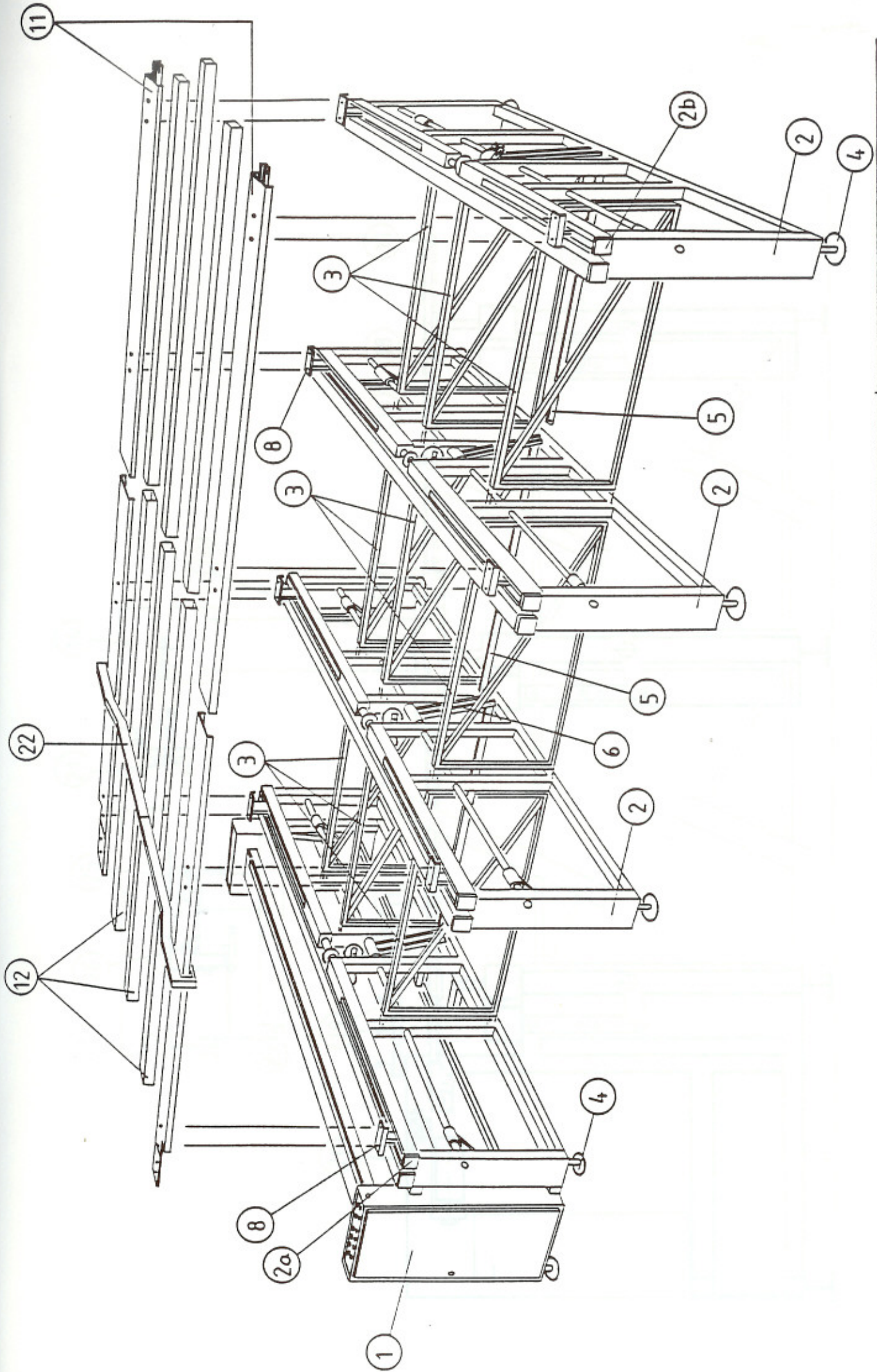


- ☉ check tension monthly
- ☉ gearbox oil 1x/year
- ☐ grease monthly
- ☐ thin-bodied oil weekly

H28S4 Maintenance-liste

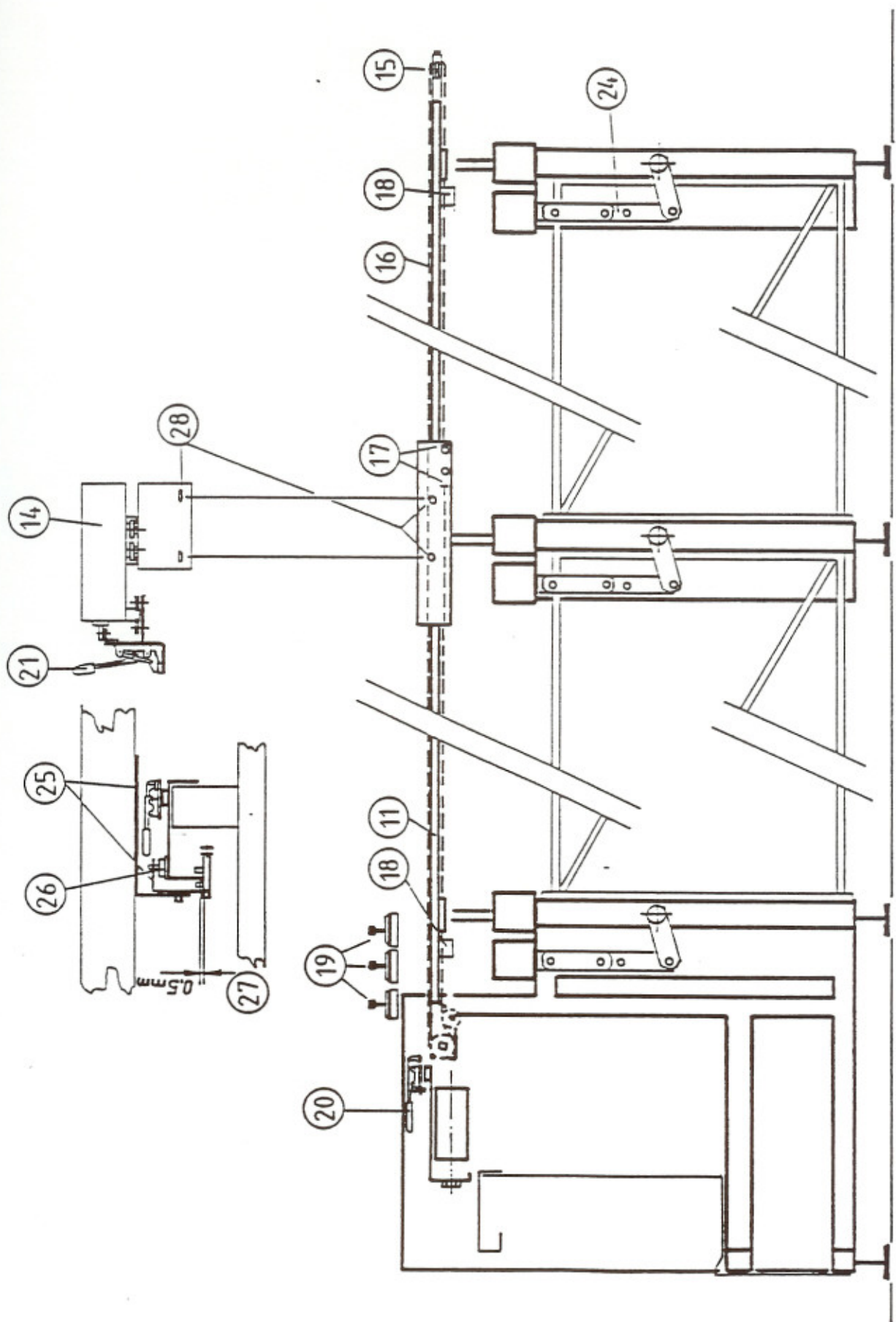
DATUM : 9.6.88
 ZCIG. NR. : 4 - 6546





H28S4

DATUM : 9.6.88
 ZCHG. NR. : 4-6547



H28S4

DATUM : 9.6.88
 ZCHG. NR. : 4-6548

