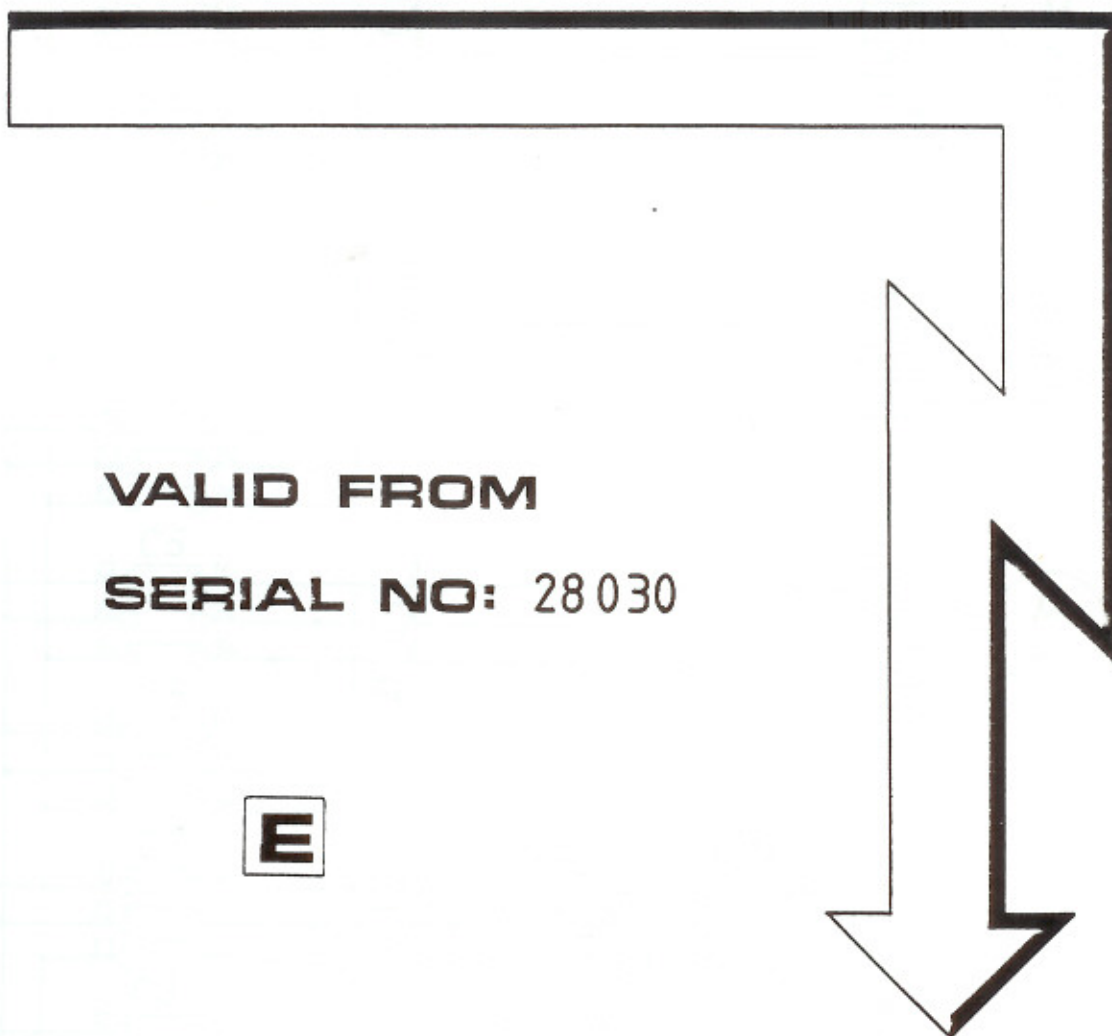


SCHALTSCHHEMA
WIRING DIAGRAM
SCHEMA DES CONNEXIONS

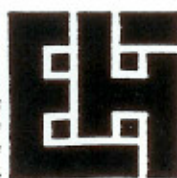


VALID FROM
SERIAL NO: 28030

E

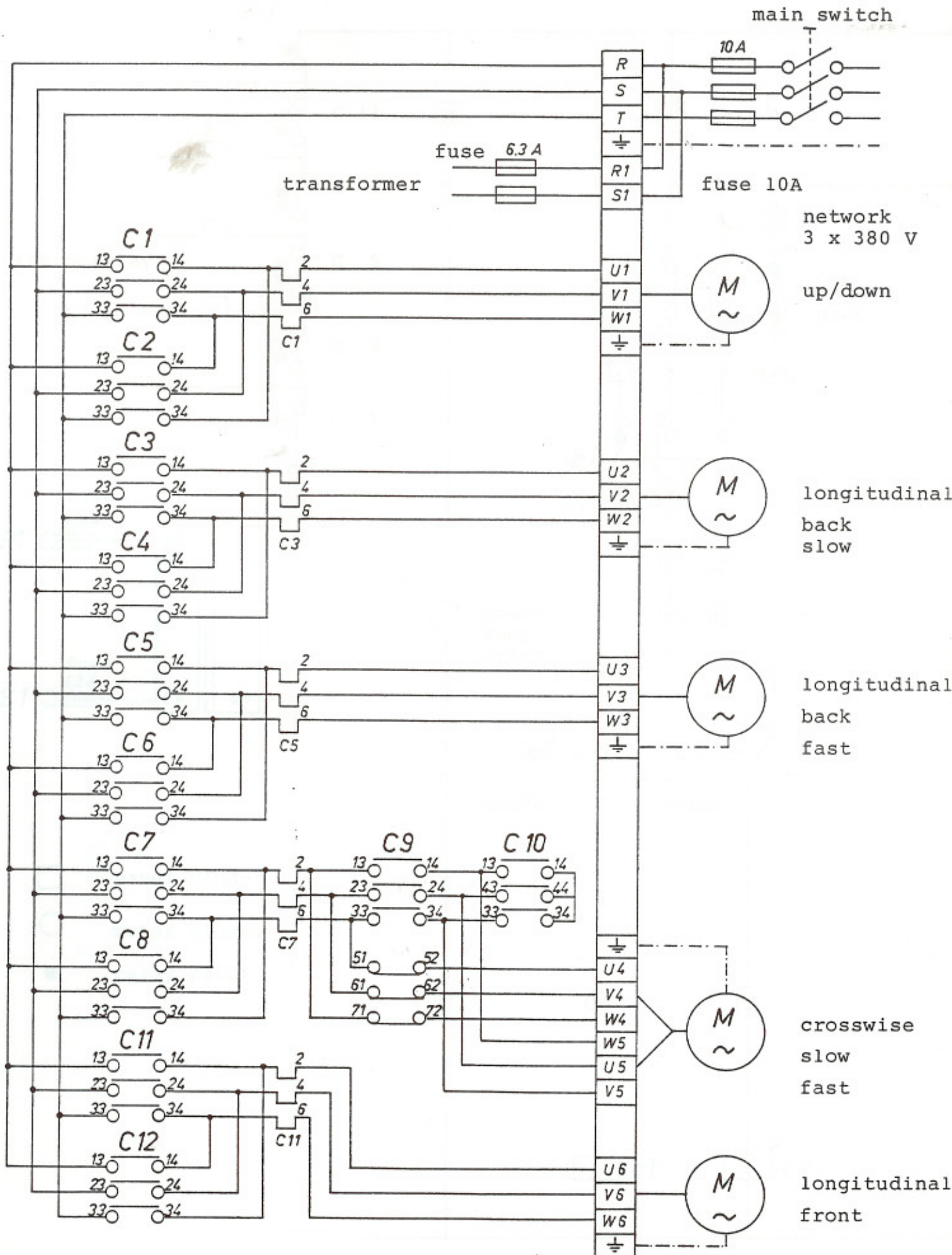
H 28 S4

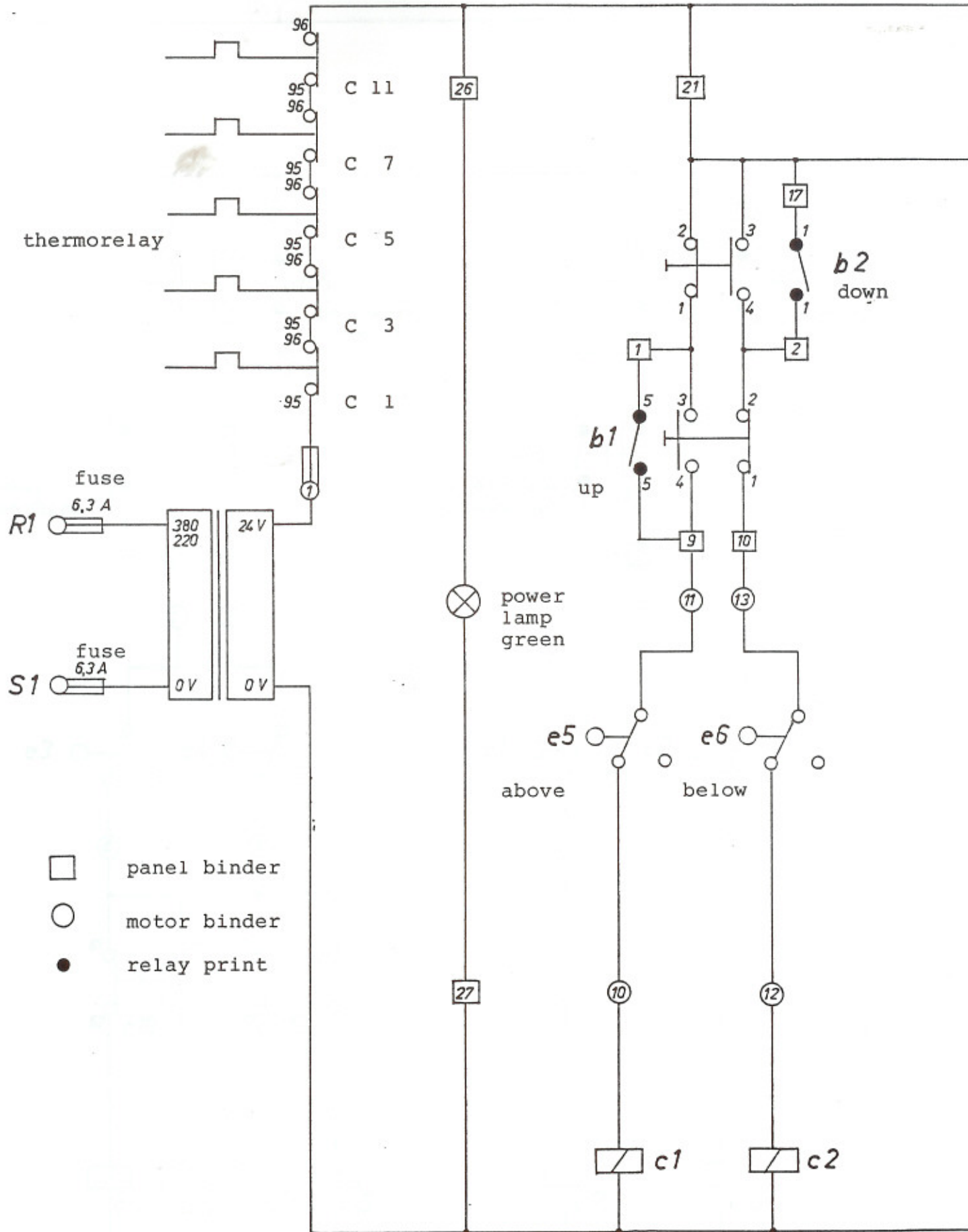
Textildruckschablonen
Filmherstellung
Schablonen-Gravuranlagen
Maschinen
für den Siebdruck



Harlecher AG
CH-8964 Rudolfstetten
Grossmattstrasse 25
Telephon 057 33 83 66
Telex 53510 HARLA CH

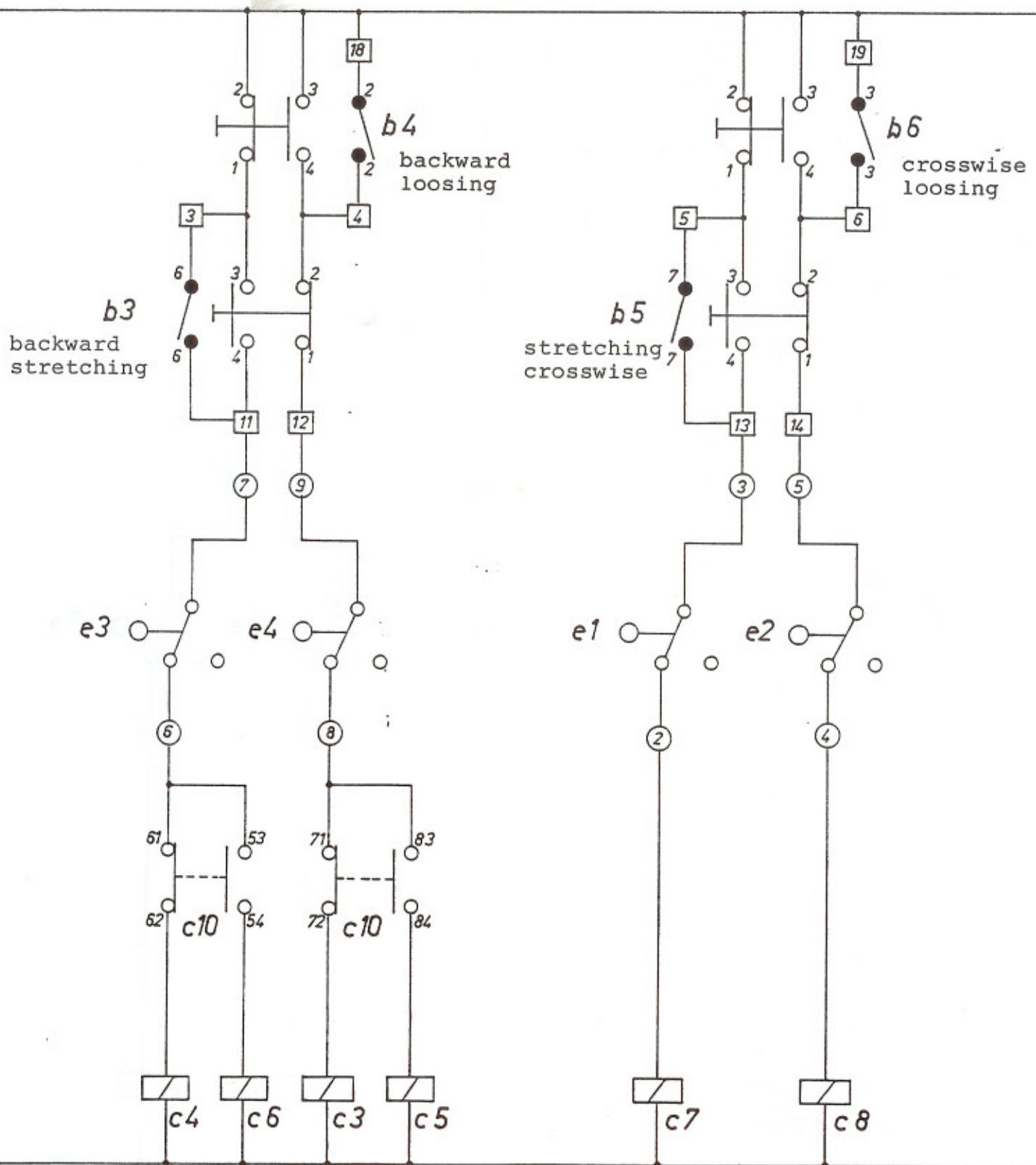
P.1



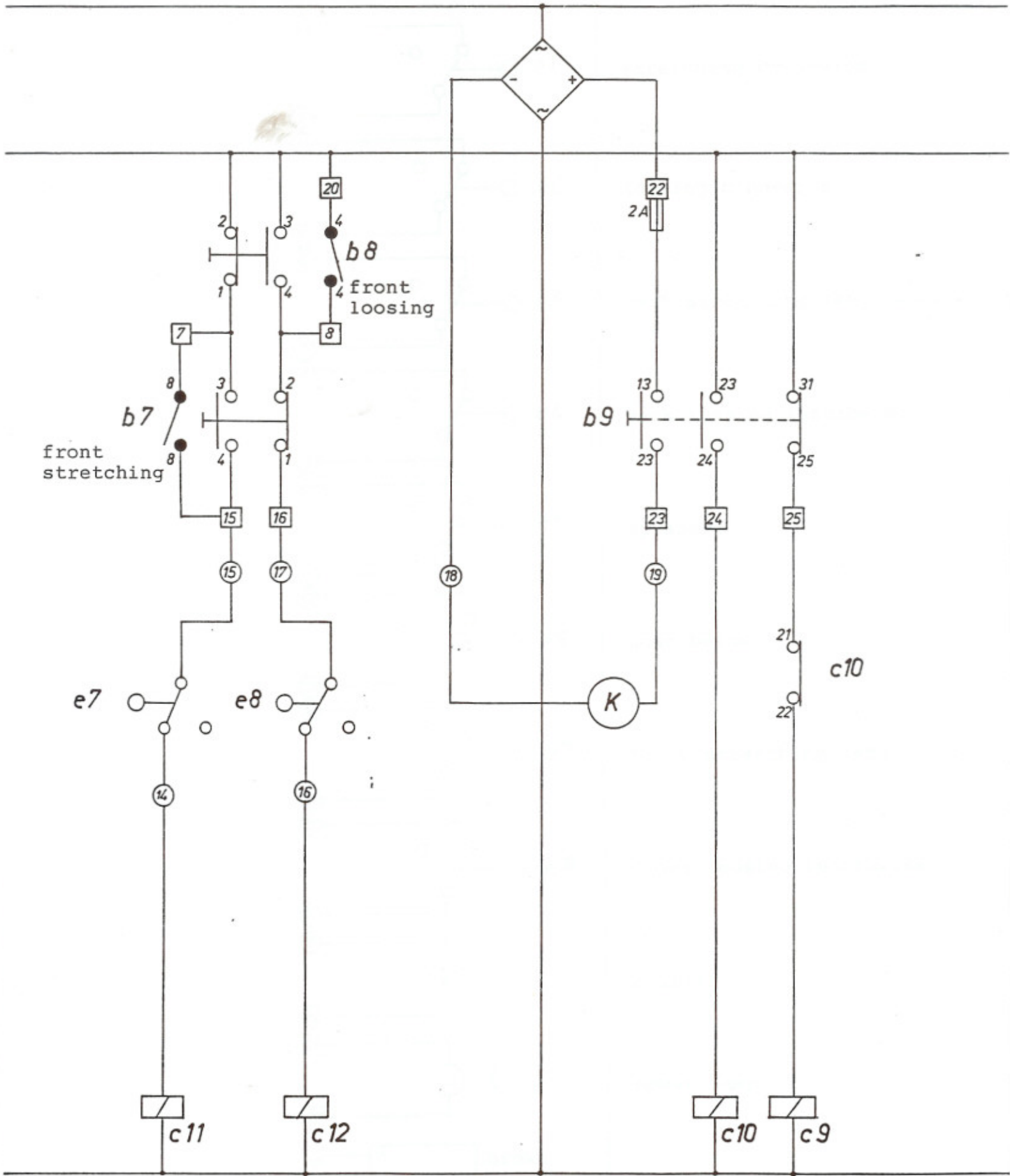


- panel binder
- motor binder
- relay print

3

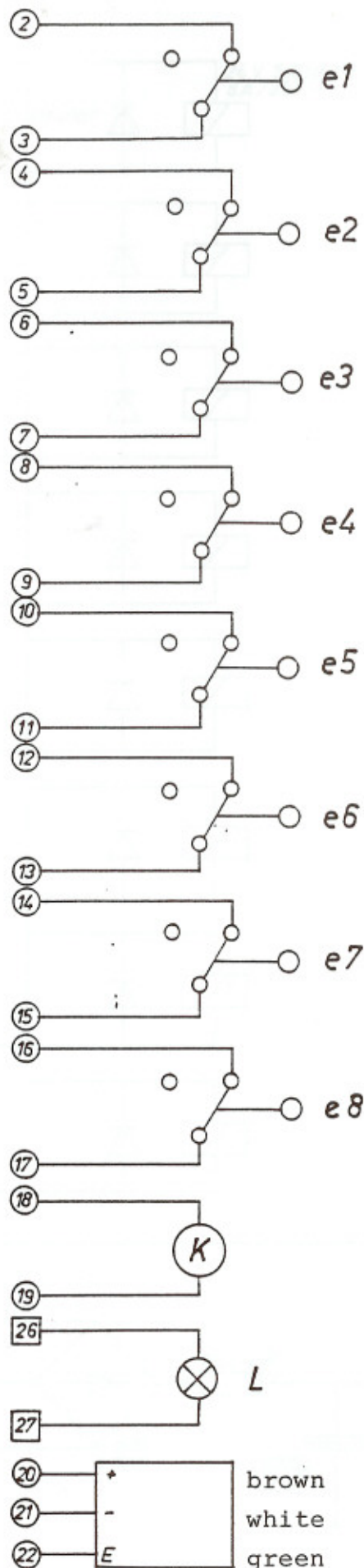


4



5

Connection Diagram for limit switches H 28 S-4



stretching crosswise

loosing crosswise

back stretching lengthwise

back loosing lengthwise

up above

down below

front stretching lengthwise

front loosing lengthwise

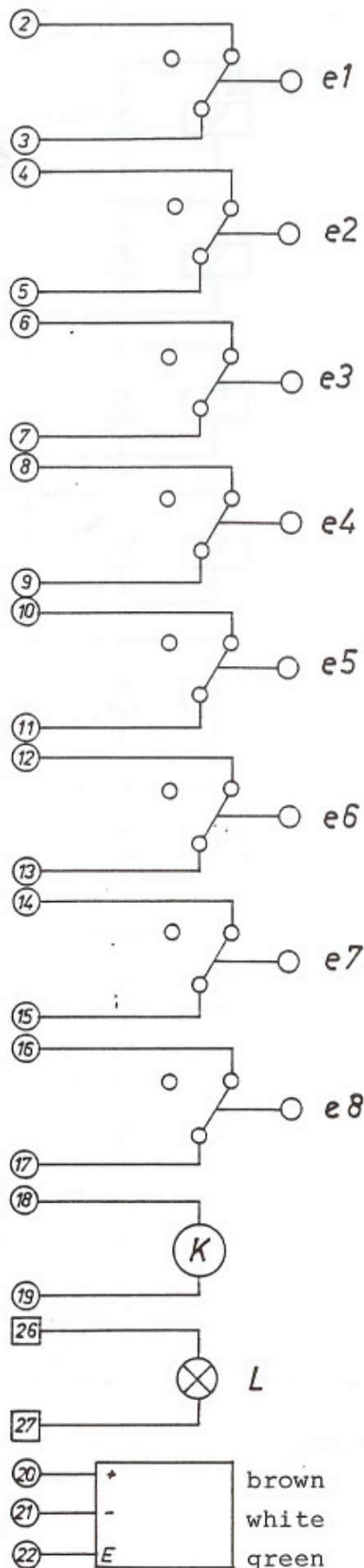
coupler

power lamp

pre-amplifier

6

Connection Diagram for limit switches H 28 S-4



stretching crosswise

loosing crosswise

back stretching lengthwise

back loosing lengthwise

up above

down below

front stretching lengthwise

front loosing lengthwise

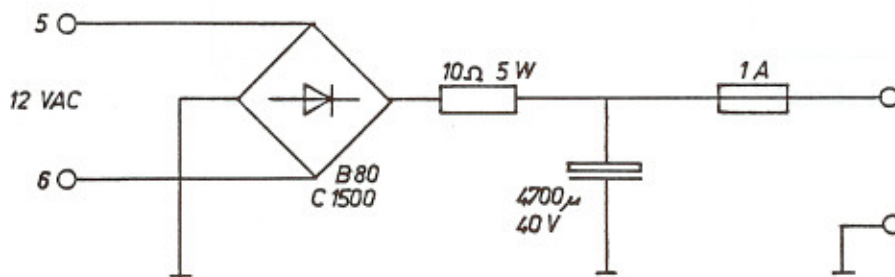
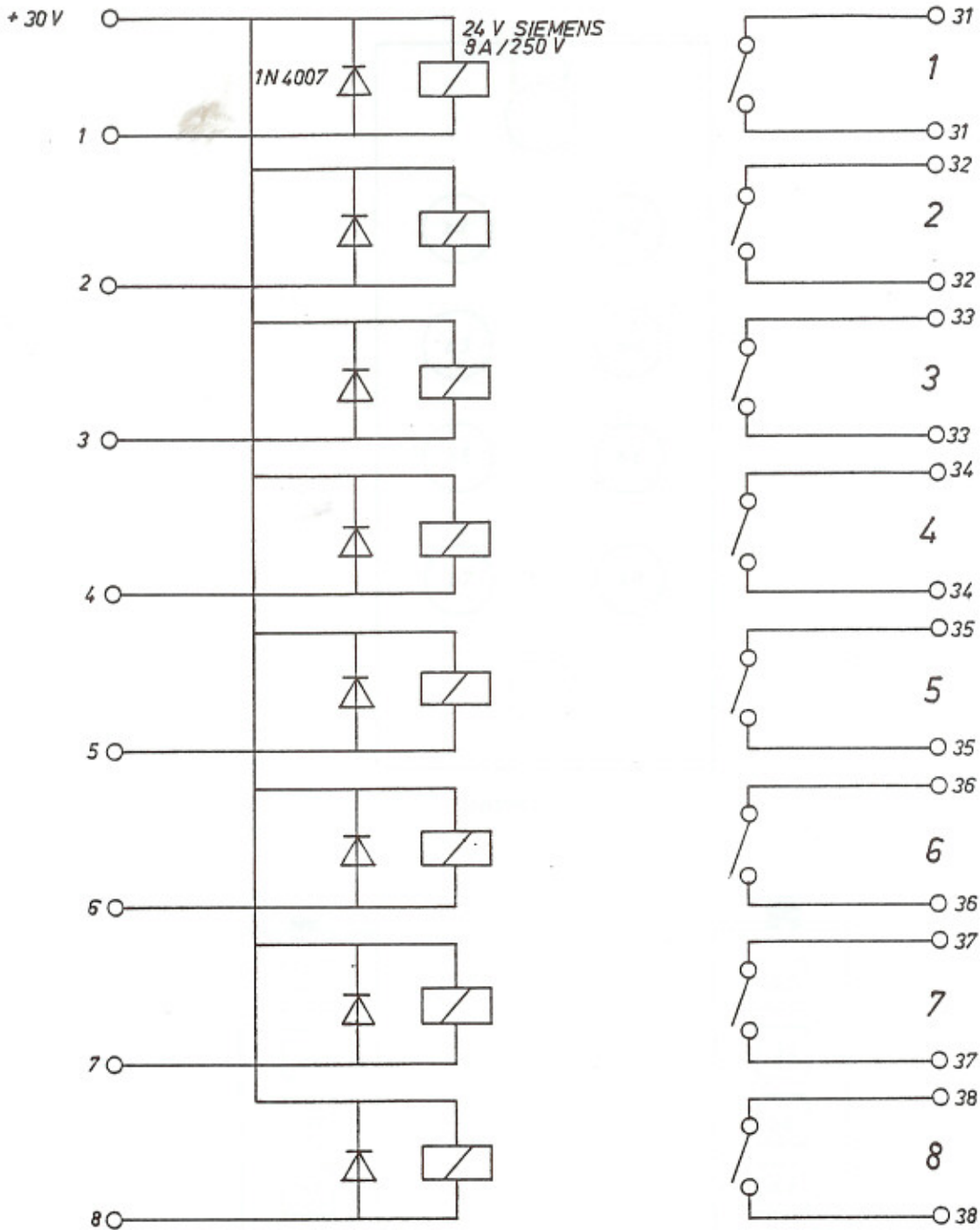
coupler

power lamp

pre-amplifier

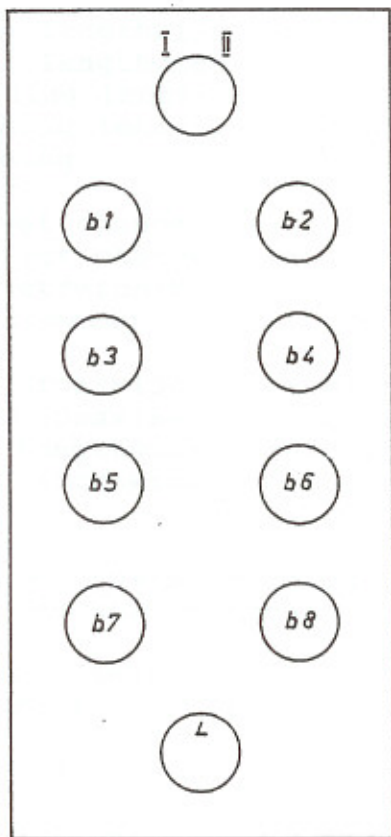
6

IR-FB 8-Channel

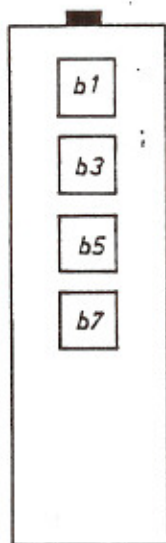


7

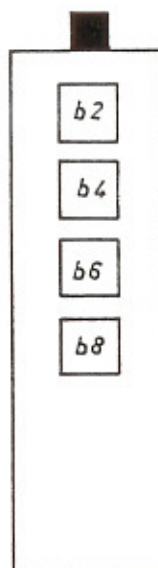
H 28 S-4 Panel/Sender - Designation



panel



sender



sender

8

Components-legend H 28 S-4

- C 1 up
- C 2 down
- C 3 backwards loosing lengthwise, slow
- C 5 backwards loosing lengthwise, fast
- C 4 backwards stretching lengthwise, slow
- C 6 backwards stretching lengthwise, fast
- C 7 crosswise stretching
- C 8 crosswise loosing
- C 9 crosswise slow/fast change-over
- C 10 lengthwise slow/fast change-over
- C 11 front lengthwise stretching
- C 12 front lengthwise loosing

- e 1 limit switch for crosswise stretching
- e 2 limit switch for crosswise loosing
- e 3 limit switch for lengthwise stretching backwards (slow/fast)
- e 4 limit switch for lengthwise loosing backwards (slow/fast)
- e 5 limit switch up
- e 6 limit switch down
- e 7 limit switch for lengthwise stretching in front
- e 8 limit switch for lengthwise loosing in front

- b 2 up impulsekey blue (1 breakcontact + 1 make contact)
- b 1 down impulsekey blue (1 breakcontact + 1 make contact)
- b 4 backward loosing
lengthwise impulsekey blue (1 breakcontact + 1 make contact)
- b 3 backward stretch-
ing lengthwise impulsekey blue (1 breakcontact + 1 make contact)
- b 6 loosing crosswise impulsekey blue (1 breakcontact + 1 make contact)
- b 5 stretching crosswise impulsekey blue (1 breakcontact + 1 make contact)
- b 8 front length-
wise loosing impulsekey blue (1 breakcontact + 1 make contact)
- b 7 front length-
wise stretching impulsekey blue (1 breakcontact + 1 make contact)
- b 9 turn switch speed I + II (1 breakcontact + 1 make contact)

- L power lamp green

power supply 3 x 380 V = motor are star \star connected

power supply 3 x 220 V = motor are delta Δ connected

Rated stream of the motor with tension:

	3 x 220 V	-----	3 x 380 V
up/down	I = 1,9 A		I = 1,1 A
lengthwise stretch- ing	I = 1,9 A		I = 1,1 A
lengthwise fast	I = 2,4 A		I = 1,5 A
crosswise	I = 4,5-6,6 A		I = 2,6-3,8 A

Parts list for control system H 28 S-4

11	contactor	CA 2-dn 140B	(C 1-C 9)	Telemecanique
1	contactor	CA 2-DN 1319B	(C 10)	Telemecanique
4	thermo relay	LR 1.D09 306		Telemecanique
1	thermo relay	LR 1-D09 308		Telemecanique
1	top	LA 1-D 04		Telemecanique
1	top	LA 1-D 22		Telemecanique
1	transformer	Prim. 0-380V / Sek. 0-12-24V		EAO
4	terminal clamp			Weidmüller
6	earth terminal			Weidmüller
7	security binder			Weidmüller
62	binder			Weidmüller

Parts list for relay-print FB

1	IR sender 8-channel	FS 748		Siemens
1	IR head-amplifier	VV 542		Siemens
1	IR receiver	EM 584		Siemens
8	relays siemens 1 UK 8A/250V standing		40 02 60	Distrelec
8	spark arrester diod 1N4007		60 02 02	Distrelec
1	bridge rectifier B80C1500			Distrelec
1	condensator 4700uF/40V			Philips
1	charging resistance 100hm 5Watt			Distrelec
3	condensator 10nF			Distrelec
1	fuse holder 5 * 20 mm			Distrelec
1	fuse 1A			Distrelec
1	bottom plate H 28 S-4			Grünig AG

Panel connection with Kroflex at strip-terminal B H 28 S-4

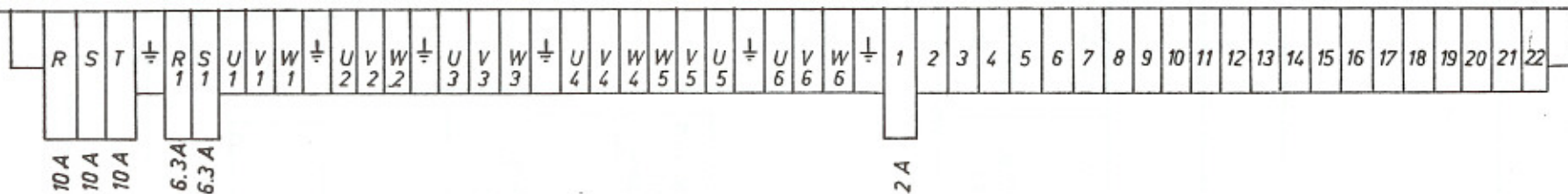
binder no.	Kroflex cabel no.	
strip-terminal B	terminal B Kroflex No.	panel notation
1	1	b 1,3
2	2	b 2,4
3	3	b 3,3
4	4	b 4,4
5	5	b 5,3
6	6	b 6,4
7	7	b 7,3
8	8	b 8,4
9	9	b 1,4
10	10	b 1,1
11	11	b 3,4
12	12	b 3,1
13	13	b 5,4
14	14	b 5,1
15	15	b 7,4
16	16	b 7,1
17	17	b 2,3
18	18	b 4,3
19	19	b 6,3
20	20	b 8,3
21	21	b 2,2
22	22	b 9,13
23	23	b 9,14
24	24	b 9,24
25	25	b 9,32
26	26	L X1
27	27	L X2

Kroflex-cabel 40 x 0,5 mm², disconnected approx. 1 m (cabel numbered)

Strip-terminal A for external connections

12

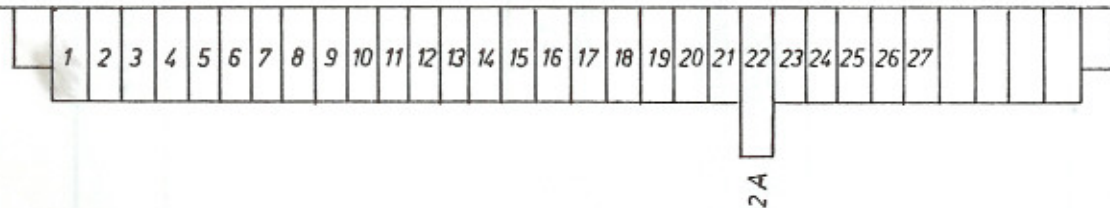
(A)



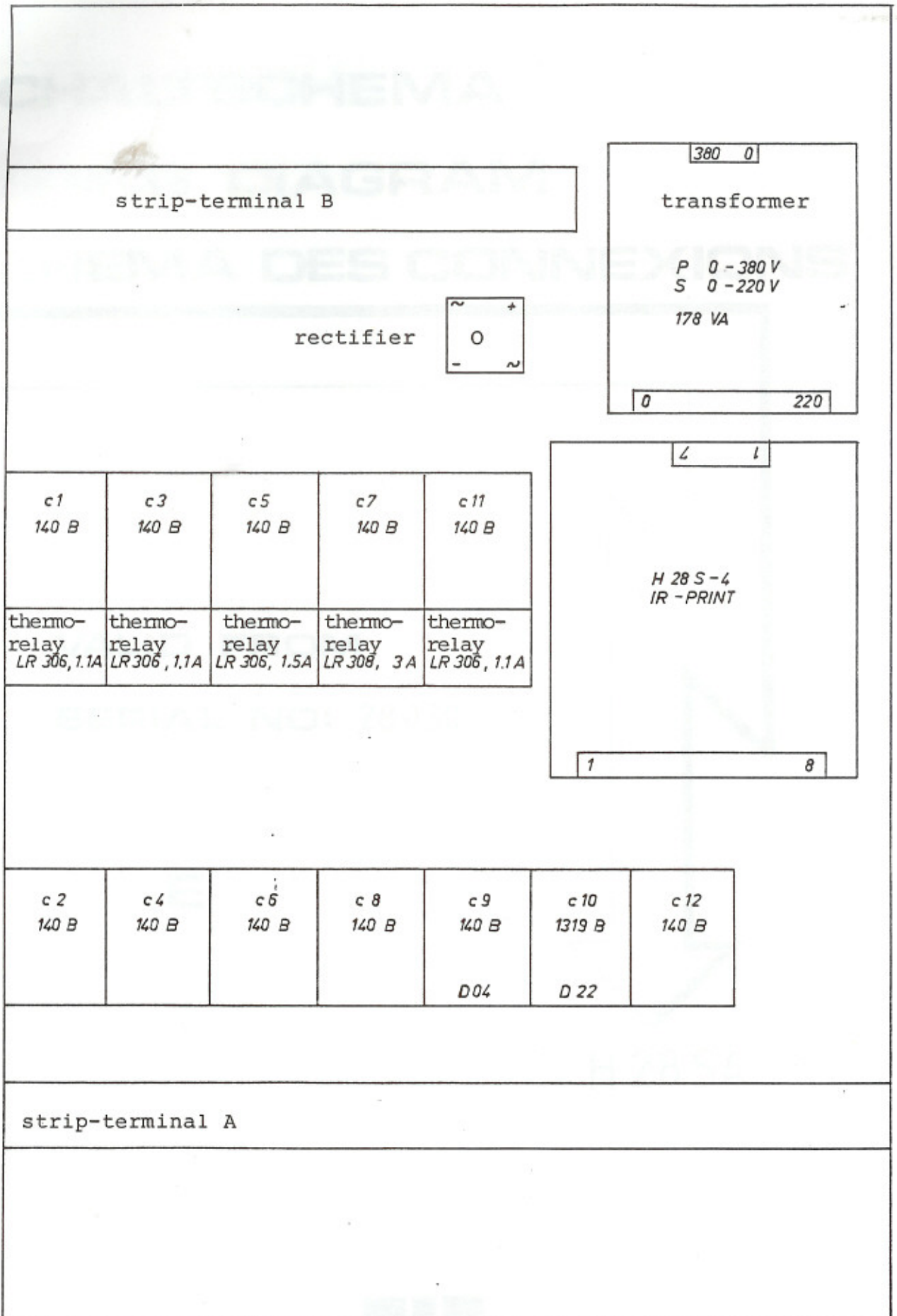
Strip-terminal B for panel



(B)



Control plate H 28 S-4, scale graduation 1:2



13